

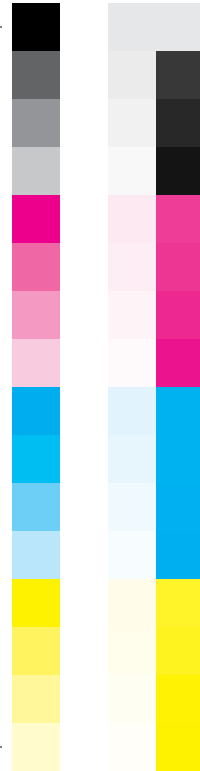
3-3/4"  
3.75"  
95.25mm

3-3/4"  
3.75"  
95.25mm



### DOWNLOAD 20 FREE SONGS NOW!

Get your FREE digital sampler consisting of 20 classic Green Hill tracks by registering for our monthly e-newsletter at [greenhillmusic.com](http://greenhillmusic.com)  
You'll receive information about our new releases, exclusive digital previews, online listening parties, and other special offers.  
Go to [www.bit.ly/20freesongs](http://www.bit.ly/20freesongs)



Inside white space is safety area.  
Outside solid lines is trim line.  
Outside dotted lines are bleed lines.



TITLE: 3-3/4" x 3-3/4" insert

DATE: 9/15/09


DIE NUMBER: 3.75x3.75\_Insert



3-3/4"  
3.75"  
95.25mm

3-3/4"  
3.75"  
95.25mm

Inside white space is safety area.  
Outside solid lines is trim line.  
Outside dotted lines are bleed lines.

 <b>ASG</b> <small>AGI+Shorewood Group</small>	
TITLE: 3-3/4" x 3-3/4" insert	
DATE: 9/15/09	DIE NUMBER: 3.75x3.75_Insert